

Pressure limiter

The pressure limiter protects the instrument from pressures that exceed their limit of security.

They allow the use of specialized pressure gauges in systems with large pressure changes. The limiter can be adjusted to the maximum pressure by the pressure gauge and supported when it is exceeded the limiter blocks the duct protecting the pressure gauge.

STANDARD PARAMETERS

Maximum pressure supported: 600 Bar

Temperature of the fluid: -40 to 120°C

Instrument connection: ½" BSP Female

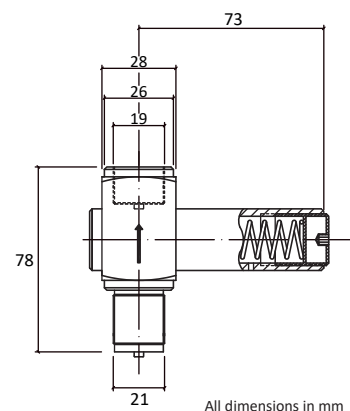
Process connection: ½" BSP Male

Degreased for O₂: Up to 50 Bar and 60°C

MATERIALS

Body and wetted parts: AISI 316 Stainless steel

Gasket/O-ring: Viton



How to order



1. Model

Bellows (200 mbar to 4 Bar)
Piston (6 Bar to 400 Bar)



2. Degreased for O₂

Yes
No

M0901-

1

2

Cooling tower

Designed to protect the gauge of the high process temperatures. The air cools the liquid in contact with the surface

STANDARD PARAMETERS

Maximum pressure supported: 1000 Bar

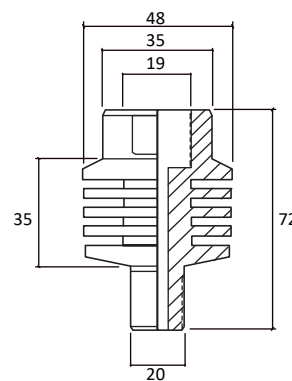
Maximum working pressure: 300°C

Instrument connection: ¼" NPT Female

Process connection: ¼" NPT Male

MATERIALS

Body and wetted parts: AISI 316 Stainless steel



How to order



Reference: M0903

Cooling tower

Designed to protect the gauge of the high process temperatures. The air cools the liquid in contact with the surface

STANDARD PARAMETERS

Maximum pressure supported: 1000 Bar

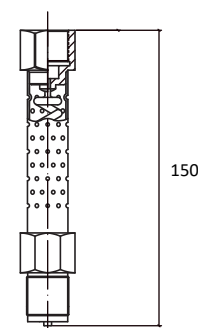
Maximum working pressure: 300°C

Instrument connection: ¼" NPT Female

Process connection: ¼" NPT Male

MATERIALS

Body and wetted parts: AISI 316 Stainless steel



How to order



Reference: M0904

Coil damper

Designed to protect the gauge from media at high temperatures, like steam. Also to reduce the effect of sudden changes in pressure. For initial installation must fill the siphon with water or other equivalent liquid

STANDARD PARAMETERS

Maximum pressure supported: 12 Bar

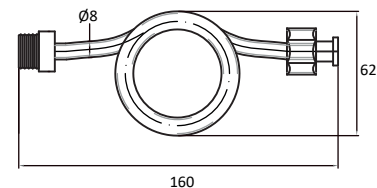
Temperature of the fluid: -40 to 120°C

Instrument connection: Female

Process connection: Male

MATERIALS

Body and wetted parts: AISI 316 Stainless steel



All dimensions in mm

How to order

1. Instrument connection / process

1/2" BSP Female / Male

1/4" BSP Female / Male

3/8" BSP Female / Male

M0902 -

1

Capillary extension

Designed to connect the gauge to a remote system and perform remote readings, it also cools the system's filling liquid providing protection to gauge. For installation it requires the measuring instrument available a flange or rim for paneling or a support for the extension

STANDARD PARAMETERS

Maximum pressure supported: 600 Bar

Temperature of the fluid: -40 to 120°C

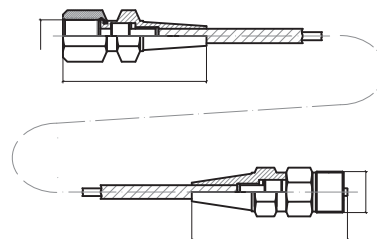
Instrument connection: 1/4" BSP Female

Threaded connection: 1/4" BSP Male

Capillary length: 1m, 1.5m, 2m or 2.5m

MATERIALS

Body and wetted parts: AISI 316 Stainless steel



How to order

Reference: M0905

Pointer dampener

Designed to protect pressure measuring instruments from pulsating pressure applications. Sudden pressure changes are damped before they reach the sensing element, protecting it from high stress. It makes readings easier and prolongs the life of the instrument.

STANDARD PARAMETERS

Maximum pressure supported: 400 Bar (6000psi)

Temperature of the fluid: -25 to 200°C

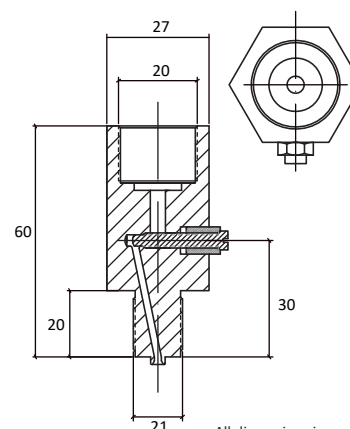
Instrument connection: 1/2" BSP Female

Threaded connection: 1/2" BSP Male

MATERIALS

Body and wetted parts: AISI 316 Stainless steel or brass

Adjustment screw: AISI 316 Stainless steel Gasket: Viton



All dimensions in mm

How to order

Reference: M0906



Gesa Termómetros S.L. · C/ Barrikako Bidea Pol. Ind. Igeltzera Pabellón D3 · 48610 Urduliz (Bizkaia) SPAIN

M18

Order it online at www.termometros.com

+34 94 676 63 64

info@termometros.com